

Year 2 Spring Term 2026

This grid outlines the knowledge and skills that Year 2 children will gain throughout this term.

As readers we will:

Continue to develop our skills in language understanding and retrieval of information, we will also increase our focus on inference skills.

We will read an exciting range of books to inspire and motivate us as readers as well as gaining exposure to inspire us in our own writing.

Children will continue to follow the synthetic phonics programme **RWI (Read Write Inc)** which will support children in reading words speedily according to the sounds they know. This will also support children in their spelling and writing skills. Children who have completed their RWI program will move on to our Whole Class Reading Scheme – **Ready Steady Comprehension**, where we will be reading classic and fairy tale stories as well as poetry.

As writers we will:

Be writing a wishing narrative inspired by the text 'The Owl Who Was Afraid of the Dark'. We will also be writing a recount of the owl's day.

In the second half of the term we will be looking the Lion and Mouse, thinking about fables and defeating a monster/powerful character.

Throughout the term, we will be continuing to develop our handwriting with regular practice in our Kinetic Letters lessons.

As historians we will:

Learn about the powerful dynasty of the Tudor Monarchs, focusing on Henry VIII and his three children: Mary I, Elizabeth I and Edward VI.

In computing we will:

Be using and creating robot algorithms helping us understand programming.

In Spring 2, we will be collecting and presenting information in pictograms.



In PSHE we will:

Be thinking about Dreams and Goals. This will require setting goals and working towards achieving them. Also,



As geographers we will:

Learn about the British Isles. We will be able to name locations and use maps and atlases to identify locations within the British Isles.

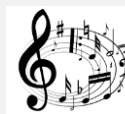


As designers we will:

Be designing, sewing and evaluating our own pencil cases using felt material.

As musicians we will:

listen, appraise and create music inspired by the musical piece, 'Peter and the Wolf'.



As mathematicians we will:

In Maths during the Spring Term, we will be continuing our work on addition and subtraction. Also, we will be completing our unit on 2 and 3 dimensional shapes. We will then be moving on to Money, Multiplication and Division, length and height then Mass, Capacity and Temperature.



At home you can support your child in maths by involving them in 'real-life' mathematical activities such as shopping, baking and cooking.

As scientists we will:

Learn about animals and including humans. We will learn about healthy diets and the impact exercise has on our body. We will also learn about offspring and the life cycle of humans, mammals and insects.



As artists we will:

Be creating and studying portraits and self portraits of famous artists, using them as inspiration for our own compositions.

In Spring 2 we will be learning about symmetry and landscapes.

In RE we will enquire about:

Does praying at regular intervals everyday help a Muslim in his/her everyday life?

How important is it to Christians that Jesus came back to life after His crucifixion?

In PE we will:

Dancing to the theme of Pirates. Our other PE unit will see us working on our accuracy with Target Games.

we will be thinking about 'Healthy Me' and how we can make choices to ensure we live healthy lifestyles.

In Spring 2 we will be studying the Indonesian ensemble music, Gamelan.

At Tillington Manor Primary School:

As part of our Social, Moral, Spiritual and Cultural curriculum we will continue to interweave our school core values into everything we do.

At Tillington Manor, our core values prepare us for life, and thread through all of our learning and experiences.



Don't forget to log onto Class dojo to receive our latest updates and see the wonderful learning that takes place each week!



Clubhouse:

If you wish to book your child into Clubhouse, please make sure you contact Miss Sharples.



Medical:

For any pupil medical related issues that you need to inform us about, please contact Miss Hall via ClassDojo. All prescribed medication in school must have a completed medication form. Please see Miss Sharples at the office.



Colder Weather

Now that the colder weather is with us, please can you make sure that your children are wearing warm winter coats, hats and scarves. Their school shoes also need to be waterproof so that they don't get soggy feet when they are playing outside. Any issues, please let your child's class teacher know.



Thank you!

Home Learning:

Year 2 home learning	What is required?	Given out?	Due back in?	Where will I find this?	Do I need a login?
Reading	School reading book – sent home each week and need to be returned when complete. Please make sure that your child brings their reading book into school every single day along with their reading diaries as they are encouraged to read in class every day.	Changed when your child completes their reading quiz	Once complete. A minimum of reading 3 times a week is expected. Your child will also have an opportunity to bring home a school reading den book.	Sent home with your child.	No.
Homework	One sheet of homework. One side will have Maths linked to recent learning. The other side will have this week's spellings.	Every Thursday	Following Thursday	Sent home with your child.	No

School Uniform:

Children **must wear full, school uniform**. Uniform plays a valuable role in contributing to our school ethos and helps to set an appropriate tone. We thank you in advance for supporting us in upholding our standards.

- A grey skirt / trousers / pinafore
- A Navy blue sweatshirt/jumper / cardigan with or without the school logo
- A light blue polo shirt, with or without the school logo
- Black or grey socks or tights
- Black school shoes – Flat, closed toed.
- PE kit can be worn on PE days only

Branded Uniform can be purchased from Crested School wear in Stafford Town centre

PE days & Uniform Reminder:

This term, your child's PE days are Monday and Thursday.

On these days please send your child into school wearing their PE kit.

A reminder, PE kit entails:

- **House coloured** t-shirt (red, blue, green or yellow)
- **plain** black or navy blue jogging bottoms/shorts
- **plain** black or navy blue zip up/jumper, their school jumper or a PE hoody
- trainers. (please make sure your child can fasten laces if trainers are lace up)

No logos or branded items of clothing as this does not uphold our uniform policy.

Please note:

No make-up, nail varnish or false nails, temporary tattoos or dyed unnatural hair colours.

Other Year Group Specific Information:

We have some fantastic learning opportunities for our children during the spring term with some very enjoyable topics, particularly our topics of electricity, the British Isles and, later on in the term, The Tudors.

We will continue to have high expectations of the children in Year 2 and support them in becoming independent children both in and out of the classroom.

As always if there are any problems or concerns, please come and speak to us.

Below are a few pieces of information to be aware of for the year ahead, and we will be more than happy to help.

- Phonics Check- Those children who were working below the expected standard in phonics at the end of Year 1 will complete a phonics check during the Summer term.
- RWI The Read Write Inc phonics programme will continue to be implemented across Year 2 during the Spring Term,

Please ensure **all** your child's belongings are clearly named, including their coats, jumpers, cardigans and water bottles and let us know if there is anything you wish to discuss further.

From the Year 2 team – Miss Hall, Mr Foster, Mrs Arshad and Miss Pearce