

Year 6 Spring Term 2026

This grid outlines the knowledge and skills that Year 6 children will gain throughout this term.

As readers we will:

In Year 6, our reading curriculum will emphasize the development of a range of reading skills, but with a particular focus on inference. Students will engage with a selection of books that explore themes of evolution and inheritance, providing a rich context for deepening their understanding of science. Through guided reading sessions and interactive discussions, students will learn to extract key information and summarize content effectively.



As mathematicians we will:

Our maths curriculum will cover a range of essential topics including, to solve problems involving ratios and algebraic expressions, understand the relationships between fractions, decimals, and percentages, and calculate perimeter and volume of various shapes. Additionally, students will explore statistical concepts, enabling them to interpret and present data effectively.



As writers we will:

Be continuing to use Linked English as our approach to develop our children as readers, writers, speakers and listeners. In Spring 1, we will be reading Cogheart by Peter Bunzl, and writing a thrilling narrative from Mr Roach's perspective, and an information text about our own mechanical, like Malkin from the story. In Spring 2, we focus on the text Holes by Louis Sachar, writing a narrative, and an information text all about snakes!

As scientists we will:

Throughout the Spring term, students will explore the fascinating world of living things and their habitats. They will explore how animals, plants and microorganisms are grouped and sorted, how the Linnaeus system helps scientists to classify animals and design their own classification system for sorting living things. They will also look at electrical circuits in more detail, building on Y4 learning, and will design and make their own electrical toy.



As historians we will:

- During Spring 1, students will study the rise of Hitler and the causes and major events of World War II.
- In Spring 2, the focus will shift to World War II and the Holocaust, where students will learn about the impact of the war on different populations and the atrocities of the Holocaust.



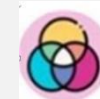
As geographers we will:

- During Spring 1, we will focus on North American geography, exploring the physical features, climate, and human geography of this vast continent.
- In Spring 2, the focus will shift to South American geography, where students will study the continent's unique ecosystems, rich cultural heritage, and significant geographical features such as the Amazon Rainforest and the Andes Mountains.



As artists and designers we will:

- Students will delve into the fascinating world of Victorian Art and Architecture as well as taking an in-depth look into the artist William Morris.
- For DT children will get the chance to research all about electrical toys and make their own — linking to our science learning!



In computing we will:

- Students will learn about variables in games, understanding how to use variables to store and manipulate data within a game environment. They will also be introduced to spreadsheets, gaining skills in organizing, analysing, and presenting data effectively.



In Spanish we will:

- In Spanish, the children will be learning how to talk about their home. They will also be learning how to discuss the Olympics.



In RE we will:

- Delve into the topic of "Why is it better to be there in person?" examining the importance of presence and participation in religious events. Additionally, the challenging question of "Why is there suffering?"



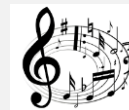
In PSHE we will:

- Health and Wellbeing-Safety and the changing Body
- Safety and the changing body-Citizenship



As musicians we will:

- Learn about blues and the groove
- Study minimalism and soundscapes



In PE we will:

Learn the rules and compete in Ultimate Frisbee and handball sessions.



At Tillington Manor Primary School:

As part of our Social, Moral, Spiritual and Cultural curriculum we will continue to interweave our school core values into everything we do.

At Tillington Manor, our core values prepare us for life, and thread through all of our learning and experiences.



Don't forget to log onto Class dojo to receive our latest updates and see the wonderful learning that takes place each week!



Clubhouse:

If you wish to book your child into Clubhouse, please make sure you contact Miss Sharples.



Medical:

For any pupil medical related issues that you need to inform us about, please contact Miss Hall via ClassDojo. All prescribed medication in school must have a completed medication form. Please see Miss Sharples at the office.



Colder Weather

Now that the colder weather is with us, please can you make sure that your children are wearing warm winter coats, hats and scarves. Their school shoes also need to be waterproof so that they don't get soggy feet when they are playing outside. Any issues, please let your child's class teacher know.



Thank you!

Home Learning:

Year 6 home learning	What is required?	Given out?	Due back in?	Where will I find this?	Do I need a login?
Reading	School reading book – sent home each week and need to be returned when complete. Please make sure that your child brings their reading book into school every single day along with their reading diaries as they are encouraged to read in class every day.	Changed when your child completes their reading quiz	Once complete. A minimum of reading 3 times a week is expected. Your child will also have an opportunity to bring home a school reading den book.	Sent home with your child.	No.
Homework	Homework contains a spelling rule for each week, 2 or 3 grammar questions and 10 arithmetic questions. This is to help your child prepare as early as possible for their SATS test at the end of the year. A revision pack will be sent later in the term, in Spring 2.	Friday	Friday	Sent home with your child	No
Timetables Rockstars (daily/weekly)	Daily times table practise. Your child's class teacher will set a variety of challenges.	Friday	Teachers will track your child's progress, week to week.	www.ttracks4ars.com	Yes – see your child's reading diary or request from your child's teacher.

School Uniform:

Children **must wear full, school uniform**. Uniform plays a valuable role in contributing to our school ethos and helps to set an appropriate tone. We thank you in advance for supporting us in upholding our standards.

- A grey skirt / trousers / pinafore
- A Navy blue sweatshirt/jumper / cardigan with or without the school logo
- A light blue polo shirt, with or without the school logo
- Black or grey socks or tights
- Black school shoes – Flat, closed toed.
- PE kit can be worn on PE days only

Branded Uniform can be purchased from Crested School wear in Stafford Town centre

PE days & Uniform Reminder:

This term, your child's PE day is Thursday.

On this day please send your child into school wearing their PE kit.

A reminder, PE kit entails:

- **House coloured** t-shirt (red,blue,green or yellow)
- **plain** black or navy blue jogging bottoms/shorts
- **plain** black or navy blue zip up/jumper, their school jumper or a PE hoody
- trainers. (please make sure your child can fasten laces if trainers are lace up)

No logos or branded items of clothing as this does not uphold our uniform policy.

Please note:

No make-up, nail varnish or false nails, temporary tattoos or dyed unnatural hair colours.

Other Year Group Specific Information:

This year, your child will be taking part in the government set SATs assessments. These will begin on 11th May 2026.. More details will follow closer to the date.

Due to this, as well as it being your child's final year of Primary School, in Year 6 it is vital for children to engage in their learning as much as possible. Therefore, regular attendance in school is crucial as well as full completion of the weekly homework set. Please ensure your child is reading regularly at home also.

Please remember that if you wish for your child to walk home alone, you must contact school with permission for them to do so. Children who need to bring in mobile phones must take them to the school office BEFORE entering the school building, for safeguarding purposes.

From the Year 6 Team – Miss Rowley and Miss Sargeant